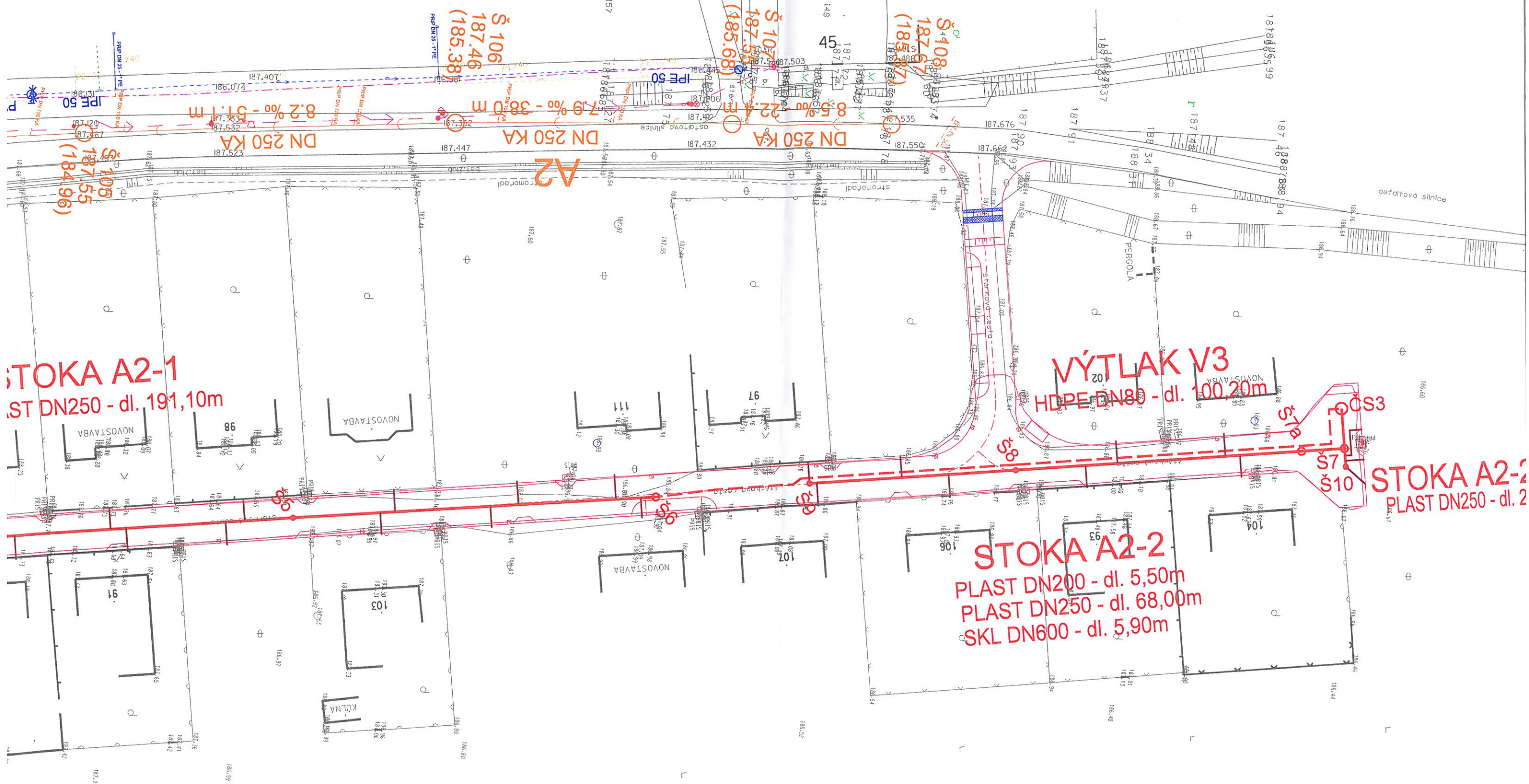


STAVBY



DN 250 KA
8.2% - 51.1m
§ 105
187.55
(184.96)

§ 106
187.46
(185.38)

§ 107
187.47
(185.68)

§ 108
187.67
(185.87)

STOKA A2-1
PLAST DN250 - dl. 191,10m

VÝTLAK V3
HDPE DN80 - dl. 100,20m

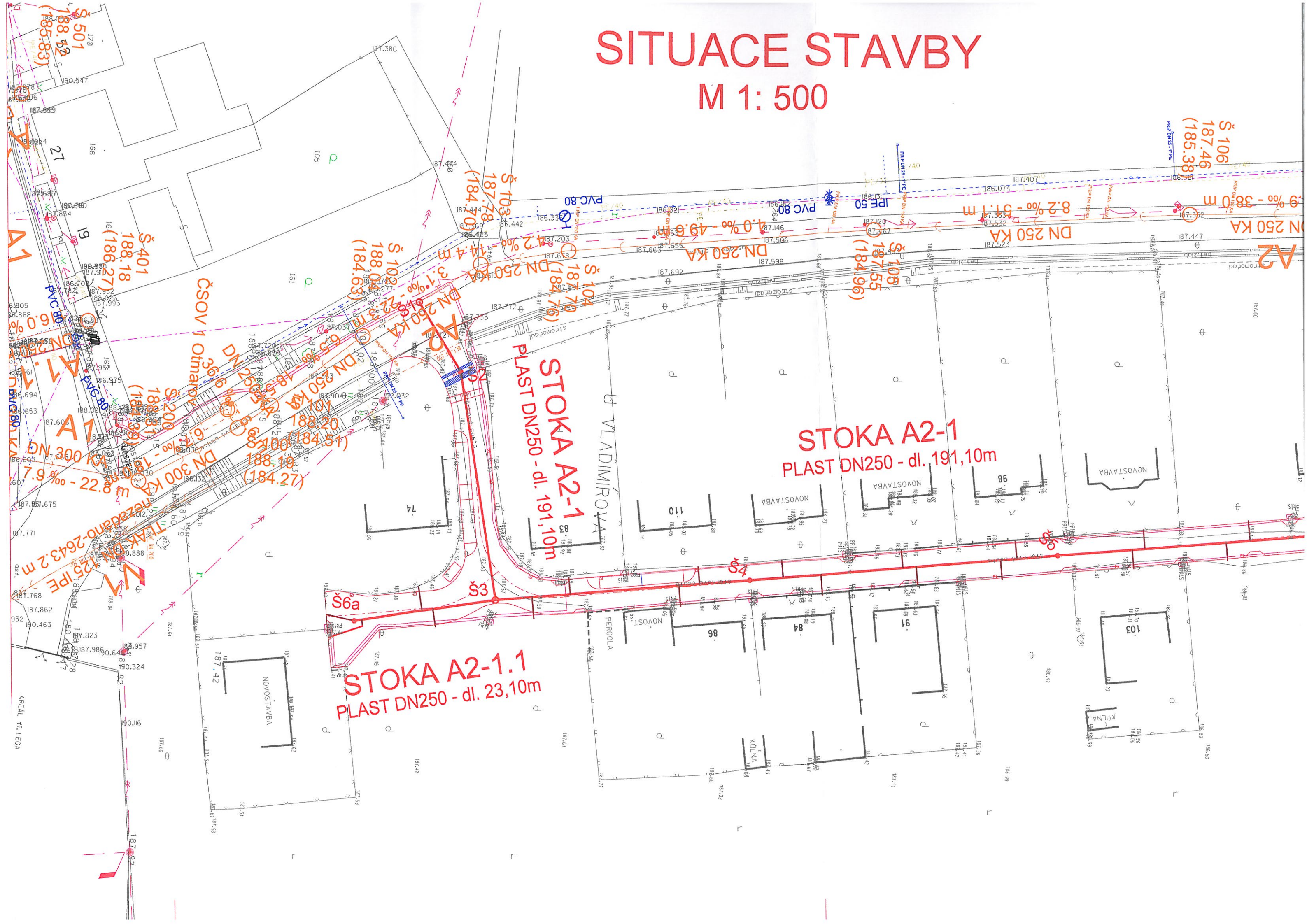
STOKA A2-2
PLAST DN200 - dl. 5,50m
PLAST DN250 - dl. 68,00m
SKL DN600 - dl. 5,90m

STOKA A2-3
PLAST DN250 - dl. 2

STOKA A2-4
PLAST DN250 - dl. 2

SITUACE STAVBY

M 1: 500



STOKA A2-1
PLAST DN250 - dl. 191,10m

STOKA A2-1.1
PLAST DN250 - dl. 23,10m

STOKA A2-1
PLAST DN250 - dl. 191,10m

ČSOV 1 Otmarov

AREAL FT. LEGA